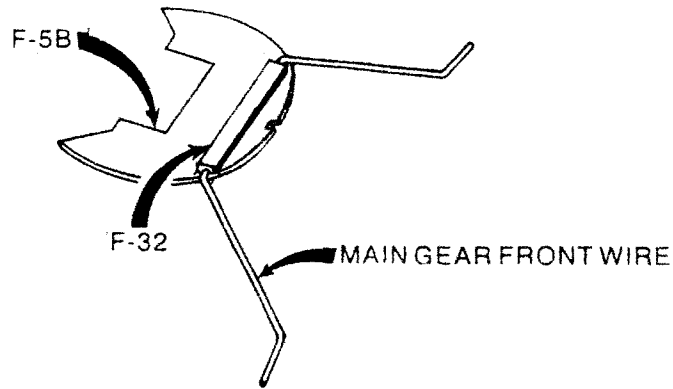
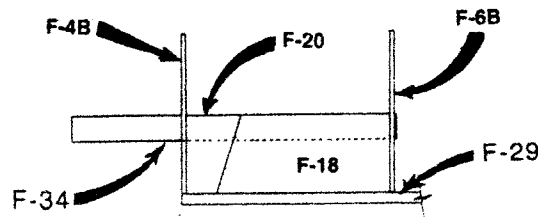


- [A] 9. Using the punch marks as a guide, place the MAIN GEAR FRONT WIRE (3/16) on top of F-5B
 [H] PLY (1/8 Die Cut). Epoxy [1] F-32 L.G. MOUNTING BLOCK (1/2 x 1 x 4-3/4) POPLAR (on the punch marks) straddling the WIRE against F-5B PLY (1/8 Die Cut). The gear must be able to rotate freely within the mounts.



- [H] 10. Glue [1] F-20 SPACER FOR F-5 FORMER (1/8 x 1-3/4 > 1-1/4 x 3-1/8) to each side of F-18 TANK SIDES and against F-4B PLY (1/8 Die Cut).

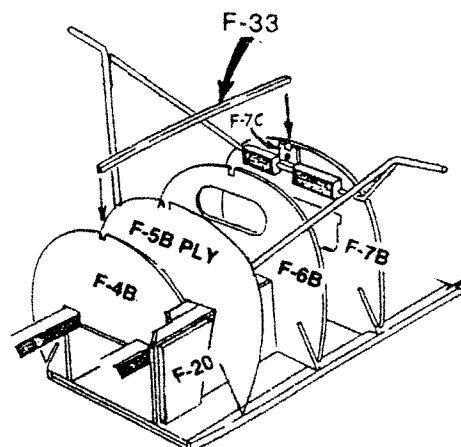
NOTE: The wide end is up. Wipe off all excess glue.



- [] 11. Glue the F-7B PLY (1/8 Die Cut) assembly (Made in STEP 8) to the F-29 CRUTCH. Be sure it is perpendicular to the board, with the mounted landing gear block assembly facing the front of the plane.

- [] 12. Glue the F-5B PLY (1/8 Die Cut) assembly (Made in STEP 9) against F-20 and F-18 allowing the former to angle back toward the tail. Refer to the SIDE VIEW. Make sure the landing gear block assembly is facing the rear of the plane.

NOTE: F-20 sets the angle of F-5B PLY (1/8 Die Cut) assembly.



- [L] 13. Glue [1] F-33 FRONT BOTTOM STRINGER (5/16 sq. x 9) from F-4B PLY (1/8 Die Cut) thru F-7B PLY (1/8 Die Cut).